

Lab Indonesia ²⁰₂₈

9th Edition Indonesia Laboratory, Scientific Analytical Equipments and Services Exhibition and Conference

11 - 13
APRIL 2028

**INDONESIA
CONVENTION
EXHIBITION (ICE)**
BSD City, Indonesia

THE ONLY PLATFORM
FOR **FUTURE LAB TECHNOLOGY**
& CHEMICALS FOR MEDICAL,
PHARMACEUTICAL, EDUCATION &
SCIENTIFIC RESEARCH
IN INDONESIA

www.lab-indo.com



Part of

Indonesia **WHX** **WORLD HEALTH EXPO**
Healthcare Week **Bangkok**

Organised by:



 Lab Indonesia

 lab_indonesia

 Lab Indonesia



PIONEERING INDONESIA'S GLOBAL PLATFORM FOR THE NEXT FUTURE OF THE LABORATORY INDUSTRY

Bringing Together the World's Laboratory Technology Solution Providers Under One Roof

Lab Indonesia stands at the forefront of laboratory and scientific progress, pioneering Indonesia's global platform for the future of the laboratory industry since its first edition in 2010. As the country's leading B2B trade exhibition dedicated to laboratory technology and chemical products for the medical, pharmaceutical, educational, and scientific research sectors, Lab Indonesia brings together the world's leading laboratory technology providers, innovators, and industry professionals under one roof to shape the future of laboratory innovation.

In an era where laboratories play a critical role in global industry, Lab Indonesia serves as a dynamic hub where innovation meets industry demand. The exhibition showcases breakthrough laboratory products from global solution

providers. It enables laboratory professionals to explore emerging trends, discover new capabilities, and adopt innovative solutions, improve operational efficiency, and accelerate research and development across multiple sectors.

More than just an exhibition, Lab Indonesia is a strategic meeting point where key industry leaders connect with Indonesia's rapidly expanding laboratory market. By bridging global innovation with local industry development, Lab Indonesia continues to play a vital role in shaping the next chapter of the laboratory industry - strengthening Indonesia's position as an emerging platform for laboratory excellence in the region.

WHY EXHIBIT AT LAB INDONESIA

Tap into Indonesia's Expanding Laboratory Market was valued at approximately USD 81 billion in 2025 and is projected to reach USD 4.99 billion by 2032, growing at a CAGR of around 8.5% as demand rises across laboratory sectors.

Meet qualified laboratory buyers actively sourcing laboratory equipment, solutions, and global suppliers.

Strengthen your brand credibility and market visibility on the right platform dedicated to the laboratory industry.

Identify potential distributors, channel partners, and strategic collaborators to accelerate your expansion into Indonesia and the wider Southeast Asian laboratory market.

Leverage face-to-face engagement with qualified industry professionals to generate high-value leads, build partnerships, and convert opportunities into long-term commercial growth.

BIGGER SPACE WIDER NETWORK GREATER OPPORTUNITIES

EXPERIENCE A LARGER PLATFORM CONNECTING THE GLOBAL LABORATORY INDUSTRY IN INDONESIA

GROWTH OPPORTUNITIES

COVERED NEW SEGMENTS:



Agriculture, Livestock & Veterinary



Chemicals & Environmental



Laboratory & Analytical Solution



Medical & Hospital Equipment



Medical & Clinical Equipment



Supporting Service & Component

EXHIBITOR PROFILE

- AGRICULTURE & FOOD
- AGRICULTURE, LIVESTOCK & VETERINARY
- ANALYTICAL SYSTEM
- BIOTECHNOLOGY & LIFE SCIENCE
- CALIBRATION SYSTEM
- CHEMICAL PROCESS TECHNOLOGY, CHEMICAL HANDLING, TRANSPORT & STORAGE
- CHEMICALS & ENVIRONMENTAL
- CHEMICALS REAGENT & SUPPLY
- DRUG DISCOVERY
- ENVIRONMENTAL SCIENCE
- TESTING
- FORENSIC & SECURITY TESTING
- HOSPITAL & MEDICAL EQUIPMENT
- LABORATORY & ANALYTICAL SOLUTION
- LABORATORY CONSUMABLE
- LABORATORY DATA SYSTEM & DOCUMENTATION
- LABORATORY INSTRUMENT
- LABORATORY TESTING
- MATERIAL TESTING & CHARACTERIZATION
- MEDICAL & CLINICAL EQUIPMENT
- MEDICAL LABORATORY MANUFACTURING
- NANOTECHNOLOGY TESTING
- OCCUPATIONAL HEALTH & SAFETY EQUIPMENT
- OPTICAL IMAGING SYSTEM & MICROSCOPE
- PETROCHEMICAL & PETROLEUM TESTING
- PHARMACEUTICAL TESTING
- QUALITY ASSURANCE & QUALITY CONTROL
- RESEARCH & DEVELOPMENT
- SCIENTIFIC EQUIPMENT
- SUPPORTING SERVICE & COMPONENT
- TEST & MEASUREMENT

VISITOR PROFILE

- ADVANCED MATERIALS
- AGRICULTURE, FISHERIES & LIVESTOCK VETERINARY
- ANIMAL FEED NUTRITION, MEDICAL
- ASSOCIATION & COMMUNITY
- BIOTECHNOLOGY
- CALIBRATION & MAINTENANCE SERVICES
- CERTIFICATION SERVICES
- CHEMICAL PROCESSING
- CHEMICALS
- SUPPLIER/DISTRIBUTOR
- CLINIC, HOSPITALS, MEDICAL CENTRES & DIAGNOSTIC LABS
- CLINICAL LABORATORY
- CONSTRUCTION
- COSMETIC & PERSONALCARE MANUFACTURE
- EDUCATION AND TRAINING
- ELECTRONICS & ELECTRICAL ENGINEERING
- SUPPLIER/DISTRIBUTOR
- ENVIRONMENTAL INSTRUMENTS SUPPLIER/DISTRIBUTOR
- ENVIRONMENTAL SCIENCES & PROTECTION
- FOOD & BEVERAGE PROCESSING
- GOVERNMENT AGENCIES
- INDUSTRIAL EQUIPMENTS
- INGREDIENTS, FLAVOR & FRAGRANCE MANUFACTURERS
- LAB EQUIPMENT MANUFACTURE
- LAB EQUIPMENT SUPPLIER/DISTRIBUTOR
- LABORATORY CONTRACTOR / SERVICE
- LABORATORY SOFTWARE & HARDWARE
- MATERIAL TESTING & INSPECTION
- MEDICAL EQUIPMENT MANUFACTURE
- MEDICAL EQUIPMENT SUPPLIER/DISTRIBUTOR
- MINING, OIL & GAS EQUIPMENT / METALURGY
- OILS & FATS AND OLEOCHEMICALS
- PACKAGING
- PETROLEUM AND PETROCHEMICALS
- PHARMACEUTICAL AND HEALTHCARE
- POLLUTION CONTROL
- RESEARCH LABORATORIES
- RUBBER AND PLASTIC PRODUCTS
- SAFETY EQUIPMENT SUPPLIER/DISTRIBUTOR
- SCHOOL & UNIVERSITY
- SPARE PARTS & COMPONENTS
- TEXTILE, GARMENT MANUFACTURE
- TOBACCO CIGARETTE, E-CIGARETTE
- TRADE PUBLICATION
- WATER & WASTE MANAGEMENT

INDUSTRY EXPERT TALK

LAB FORUM International Scientific Conferences



LabForum reinforces Lab Indonesia's position as a leading platform for industry knowledge exchange, bringing together global experts, researchers, and industry leaders through high-level scientific conferences and strategic discussion forums.

In collaboration with government institutions, organizations, and leading associations, the program delivers global perspectives while enabling direct engagement with key stakeholders and decision-makers, fostering meaningful collaboration and driving industry advancement.

LAB TALK Technical Seminars, Industry Workshops & Live Demonstrations



LabTalk is a dynamic program featuring technical seminars, industry workshops, and live demonstrations led by experts and key players in the laboratory industry. Designed to deliver practical knowledge and real-world applications, the program provides in-depth insights into industry trends, product innovations, and the latest technological advancements within a professional learning environment.



ONE TO ONE BUSINESS MATCHING

The One-to-One Business Matching is an exclusive matchmaking program designed to facilitate pre-arranged meetings between exhibitors and potential trade buyers, fostering meaningful connections during and after the exhibition while optimizing interactions among all parties.

Held throughout the three-day exhibition, the program aims to bring buyers, exhibitors, and key stakeholders together in one place. The One-to-One Business Matching service is designed to enhance your experience by enabling direct meetings and focused discussions, helping you identify the most suitable partners for your business needs. This program unlocks valuable business opportunities and supports you in connecting with potential global partners to expand your business.

KEY FACTS & FIGURES

EXHIBITION HIGHLIGHTS



305 EXHIBITING COMPANIES FROM **16** COUNTRIES

Increased **29.8%** compared to **2024**



20,261 PROFESSIONAL ATTENDEES

FROM **33** COUNTRIES/
REGIONS

Increased by **36.95%** compared to **2024**

14.580 SQM OF EXHIBITION SPACE

4 PAVILIONS



CHINA



GERMANY



KOREA



MALAYSIA

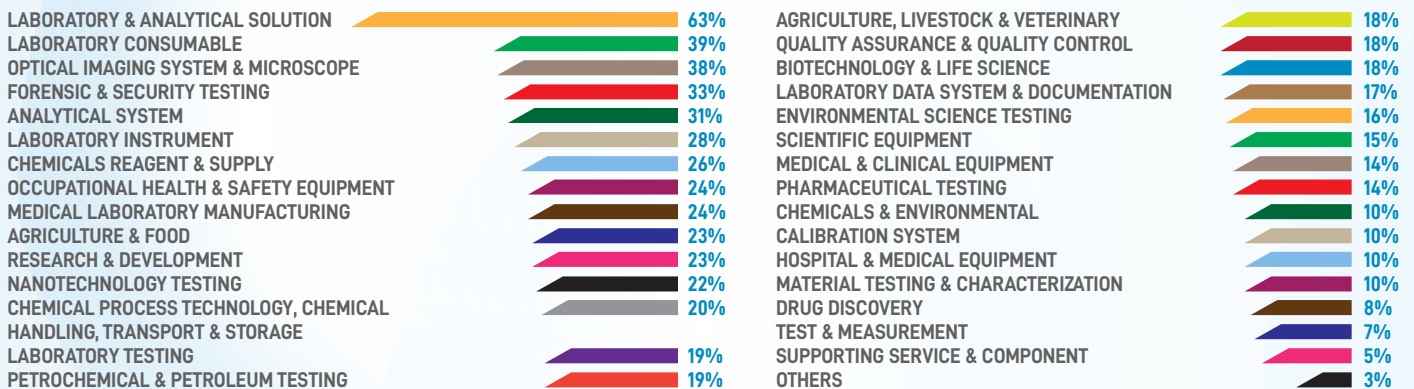


EXHIBITOR'S STATISTICS

EXHIBITING COUNTRIES / REGIONS OF ORIGIN



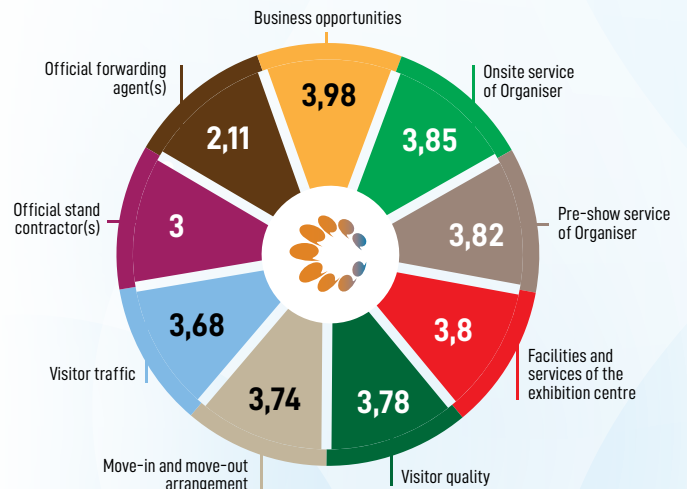
EXHIBITOR'S PRIMARY BUSINESS ACTIVITY



EXHIBITORS TOLD US THEY WERE SUCCESSFUL IN



EXHIBITORS SATISFIED



60% of Exhibitors have expressed interest or submitted booth reservation applications for **Lab Indonesia 2028**

VISITOR'S STATISTICS

VISITOR'S COUNTRIES/ REGIONS OF ORIGIN



INDUSTRY SECTOR OF VISITORS



VISITORS TOLD US THEY WERE SUCCESSFUL IN

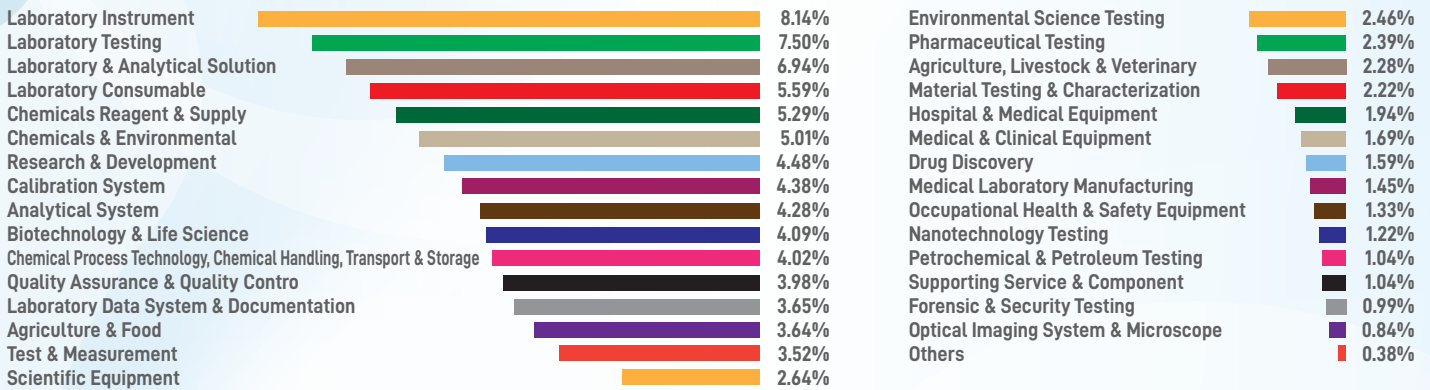


VISITORS SATISFIED

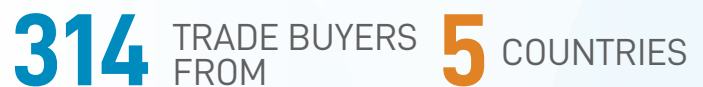


VISITOR'S STATISTICS

VISITOR'S AREA OF INTEREST



ONE TO ONE BUSINESS MATCHING STATISTICS



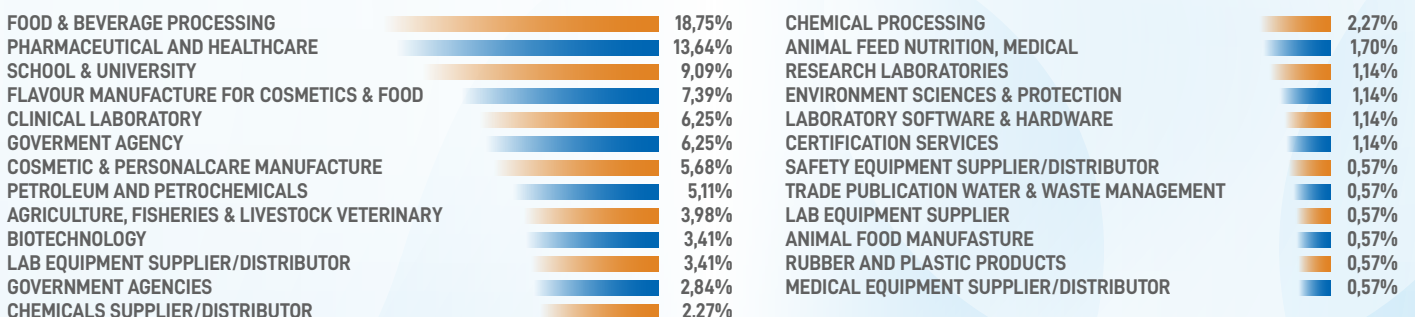
Increased **31,77%** compared to 2024

Increased **107,95%** compared to 2024

152
COMPANIES

TOTAL SUCCESSFUL TRANSACTIONS:
USD 4,192,485
AND GROWING

BUYER'S LINE OF BUSINESS



HERE'S WHAT THEY SAID ABOUT LAB INDONESIA 2026

EXHIBITOR'S TESTIMONY

KRISHNA KODOTH

DIRECTOR & GENERAL MANAGER INDONESIA
OF THERMOFISHER SCIENTIFIC

Lab Indonesia has been a very positive experience for us this year. The exhibition brings together a highly relevant audience from various laboratory sectors, making the conversations and interactions far more meaningful. We have seen strong visitor engagement since day one, and it is encouraging to witness the rapid growth and activity within Indonesia's laboratory industry. Lab Indonesia 2026 has been well-organized, supportive, and highly valuable in strengthening our presence in the market.

ZOE ZHOU

GLOBAL BUSINESS MANAGER
OF WESTINGAREA

As a first-time exhibitor, we were excited to experience firsthand the strong energy and business potential of Indonesia's laboratory market. Lab Indonesia provided an excellent opportunity for us to introduce advanced life science and analytical technologies while connecting directly with end users and distribution partners across the region. We were impressed by the high level of visitor engagement, the warm response from attendees, and the professional support provided throughout the exhibition. This experience has strengthened our confidence in Indonesia as a key market in Southeast Asia, and we look forward to participating again in the future.

REGY REYNALDI

SALES ENGINEER OF METTLER TOLEDO

Continuous innovation in laboratory technology, especially in automation, robotics, and digitalization, is driving the industry forward, and Lab Indonesia provides the perfect platform to showcase those advancements directly to users. Throughout the exhibition, we witnessed strong enthusiasm from visitors from both the government and private sectors, with many showing great interest in hands-on demonstrations and integrated laboratory solutions. Beyond introducing new technologies, the exhibition also creates valuable opportunities to strengthen customer relationships, particularly in terms of after-sales support and long-term collaboration. It is encouraging to see how the industry continues to evolve together toward a more advanced and connected laboratory ecosystem.

BUYER'S TESTIMONY

WINDA RAHMA TIARA | CEO & DIRECTOR OF MAG GROUP (CV. MAG WILAB INDONESIA & SEABORGIUM SOUTH SUMATRA)

Returning to Lab Indonesia for the second time has been a rewarding experience for both my company and me. The exhibition provides direct access to emerging laboratory technologies, innovative chemical solutions, and potential business partners from across the industry. What stands out most is the opportunity to exchange ideas with exhibitors and gain deeper insights into products that can improve laboratory efficiency and research performance. Lab Indonesia continues to be an important meeting point for industry professionals seeking innovation, collaboration, and long-term business growth.

MOHD IKHWAN BIN ISMAIL | BUSINESS DEVELOPMENT MANAGER OF LIFESPIN GMBH

"Lab Indonesia has been an effective platform for us to connect directly with potential partners, distributors, and industry experts while exploring the latest laboratory technologies and innovations. The exhibition made it easier to compare solutions, evaluate equipment firsthand, and engage in detailed discussions with exhibitors. We were particularly impressed by the strong technical support and the opportunity to discover advanced technologies that align with our operational needs. Overall, Lab Indonesia provides valuable business networking opportunities and a productive environment for sourcing new laboratory solutions.

YAYAN SUSANTO S.E., M.E. | LABORATORY MANAGER OF SOLUSI BANGUN INDONESIA TBK

Lab Indonesia provides a practical and efficient platform for us to evaluate laboratory equipment and explore solutions that meet the needs of our facilities across multiple locations. Unlike online discussions or catalog reviews, the exhibition allows us to see the equipment firsthand, speak directly with technical experts, and gain a clearer understanding of product specifications and performance. We were pleased to find many of the high-value instruments we were searching for, along with significant advancements in technology and capabilities compared to previous years. The exhibition serves as a valuable reference point for future procurement decisions and operational development.

SPEAKER'S TESTIMONY

DRS. ENDRA MURYANTO, APT., MM.
CHAIRMAN OF ASLABKESDA INDONESIA

Keeping up with the rapid development of laboratory technology has become increasingly important, and Lab Indonesia provides the right platform to support that need. Through direct interaction with supplier and industry professionals, we are able to gain deeper insights into the latest equipment innovations and solutions that contribute to improved laboratory services. The exhibition also encourages collaboration among industry players, institutions, and academics, creating valuable opportunities for continuous improvement and knowledge sharing. For professionals in the laboratory sector, Lab Indonesia serves as a meaningful platform to stay connected with the future direction of the industry."

PROF. DR. APT. YANDI SYUKRI, S.SI., M.SI
CHAIRMAN OF ASOSIASI PENDIDIKAN TINGGI
FARMASI INDONESIA (APTFI)

For academic institutions and researchers, access to advanced laboratory technology is essential to support innovation and impactful research. Lab Indonesia creates valuable opportunities for universities, industry players, and government institutions to collaborate, exchange ideas, and explore solutions that address future market needs. It was encouraging to witness the strong enthusiasm from the academic sector, particularly in discovering innovations that can contribute to the growth of Indonesia's pharmaceutical and research industries.

DR. PURWANTO AP, SP.PK(K)
CHAIRMAN OF IKATAN LABORATORIUM
KESEHATAN INDONESIA (ILKI)

Lab Indonesia continues to play an important role in supporting the advancement of the laboratory industry in Indonesia, not only as a platform for exhibitions and product introductions, but also as a space that encourages knowledge sharing, quality improvement, and collaboration across the sector. The exhibition reflects the continuous growth of Indonesia's laboratory landscape, where the industry is steadily evolving beyond being merely a market into a more active contributor to the global ecosystem. With increasing public awareness of healthcare services and laboratory standards, initiatives like Lab Indonesia are becoming even more relevant in strengthening industry capabilities, encouraging innovation, and supporting the development of skilled human resources for the future.

HERE'S WHAT THEY SAID ABOUT LAB INDONESIA 2026

VISITOR'S TESTIMONY

KENNETH PARK | DIRECTOR OF LABRON CO., LTD

Visiting Lab Indonesia 2026 gave us a strong impression of how rapidly Indonesia's laboratory industry is growing and evolving. As a manufacturer from South Korea, the exhibition provided valuable insights into market demands, emerging technologies, and the competitive landscape across the region. We were particularly interested in advancements in laboratory mixing and general laboratory technologies, as well as the opportunity to observe global industry players gathered in one place. The energy, scale, and professionalism of the exhibition convinced us that Lab Indonesia 2026 is an important platform for international companies looking to expand into the Indonesian market.

WENI INDRAYANI | MANAGER OF PT YOS SURYA CEMERLANG

Lab Indonesia has been a highly valuable platform for us to connect directly with laboratory equipment and chemical distributors in one place. As a supplier, the exhibition made it easier for us to gather product information, meet sales representatives, and establish new business contacts for future procurement needs. We were impressed by the wide range of exhibitors and appreciated how accessible and well-organized the exhibition was throughout our visit. Lab Indonesia creates a productive environment for networking and sourcing reliable laboratory solutions.

MARCUS SERIATNA | TECHNICAL MANAGER OF LAS GLOBAL PTE LTD

Lab Indonesia has demonstrated strong potential as a key meeting point for the laboratory and analytical technology industry in Indonesia. During our visit, we were encouraged by the high level of visitor engagement and the diverse range of industry segments represented at the exhibition. As a company specializing in cement analysis technology, we found the exhibition highly relevant for monitoring market developments and connecting with businesses within our sector. The experience has strengthened our confidence in the market opportunity and motivated us to explore more active participation in future editions.

INVESTMENT



OPTION 1:

Raw Space

@ IDR 6.250.000 per sqm

@ USD 475 per sqm

@ MYR 1.550 per sqm

(min. 36 Sqm)

OPTION 2:

Shell Scheme

@ IDR 6.900.000 per sqm

@ USD 523 per sqm

@ MYR 1.615 per sqm (Applied for 9 sqm - 35 sqm)



19.000 SQM EXHIBITION SPACE



350 COMPANIES EXPECTED TO EXHIBIT



22.000 PROFESSIONAL ATTENDEES EXPECTED

Part of

**Indonesia
Healthcare Week**

WHX

WORLD
HEALTH
EXPO

Bangkok

Organised by:



Sustainable Events:



For any enquiries, please contact:

Booth Enquiries:

Ms. Dewi Setiani: +62 812 8721 9697 | dewi.setiani@informa.com

Ms. Alya Maharani: +62 823 1096 1780 | alya.maharani@informa.com

Marketing & Media Partnership Enquiries:

Ms. Anggita D. Fazarianthy: +62 813 1039 1107 | anggita.fazarianthy@informa.com